

H16 - Danish Crown contract: Flex pick-up



Flex pick-up contract:

1. Basic weight and weight deduction as in the regular calculation model.
2. Margin per pig: DKK 2.
 - a. Filling the load with pigs from other producers.
 - b. For splitting a load.
 - c. +/- 1 week in relation to a normal pick-up day is accepted.
3. Regulation of DKK - 3 per pig all day.
4. The right to special requirements no longer applies.

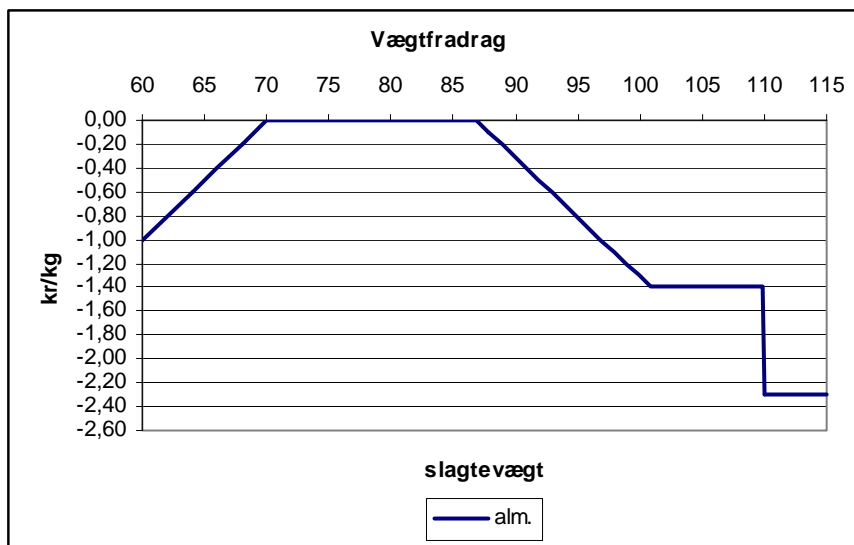


The contract is not attractive!

- It is not possible to obtain bonus via DC Marked.

Additional comments - Danish Crown contract: Flex pick-up

1.



2.

Standard rules for advanced and postponed pigs apply:

Advanced: Weight compensation for 600 g slaughter weight a day.

Postponed for more than 1 day: The weight limit is increased by 1,000 g for each day of postponement after the first day.

3.

The general terms and conditions state a deduction of DKK 3 per pig for pick-up during daytime between 06 and 18, but no deduction during night-time between 18 and 06. The terms of the Flex contract are thus not as good on this area.

4.

For instance, empty clean truck, fixed pick-up time etc.

